

LEGACY COMMERCIAL



FOR SALE | \$240,000

930 25TH STREET SE | SALEM, OR 97301

PROPERTY SUMMARY:

1,410 SF Professional Office Building For Sale in Great Central Salem Location. Possible Two (2) Tenant Split Floor Plan. Also a Great Opportunity for a Single Tenant or Owner-User.

PROPERTY HIGHLIGHTS:

- 1,410 SF office building
- Remodeled in 1986
- Potential multi-tenant opportunity
- Very clean & open office spaces
- Great Central Salem location
- 7 oversized parking spaces
- Zoned: CO
- High daytime demographics
- Occupied: Do Not Disturb Tenant

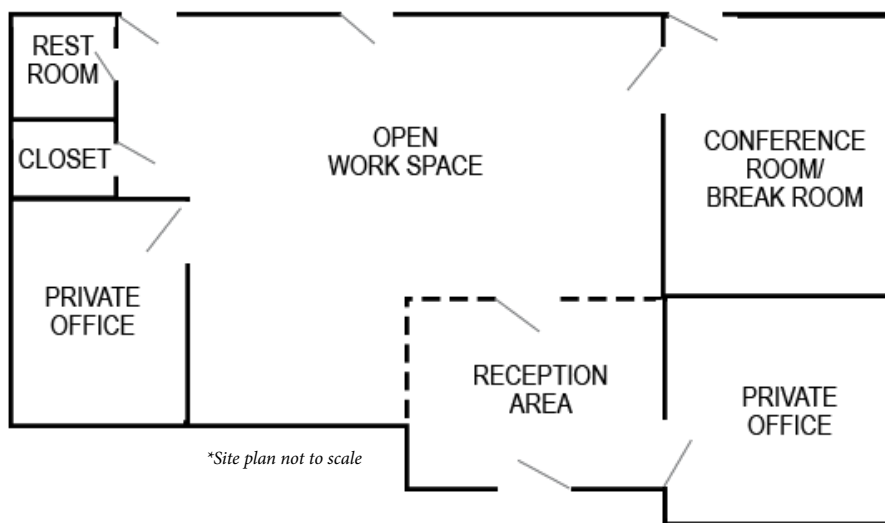


LEGACY
Real Estate
COMMERCIAL

Elesa Doll

PH: 503.373.3089

EDOLL@LEGACYRE.COM



LEGACY
Real Estate
COMMERCIAL

925 COMMERCIAL STREET SE
SUITE 220
SALEM, OR 97302
503.390.1375
LEGACY-CRE.COM